

# CUTWATER 32 COUPE



**Do it all with this no-compromise cruiser.** The Cutwater 32 Coupe (C-32 C) introduces an entirely new way of thinking about an outboard-powered cruiser. Performance, versatility and comfort are central to the design of the C-32 C. It's advanced double-stepped, deep-V hull design combines speed, efficiency and superior stability for a fun and comfortable ride. Our Laminar Flow Interrupters allow for smooth, positive cornering. Roll the throttles forward and you'll feel the powerful twin, counter-rotating 300HP Yamaha outboards propel the C-32 C to remarkable speeds.

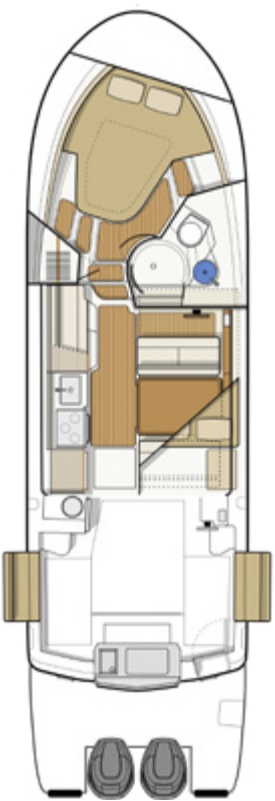
Upon stepping into the comfortable interior, you'll feel fully at home. With wood accents throughout, a fully furnished galley, large dinette, private head and shower, and a luxurious master stateroom featuring an island bed with recessed LED lighting, the C-32 C delivers a resort-like experience. The large midship stateroom and convertible dinette comfortably sleep up to four additional guests.

You'll find extensive entertaining space on deck. The cockpit hosts expanding seating, rear-facing lounge, an electric BBQ grill, sink and an additional refrigerator. Moving to the foredeck you find the hide-away lounge seating to relax and take in the sunset. Equipped with the latest in marine electronics, the helm is where you're fully in control. Dual Garmin 8612xsv chartplotters with sonar, xHD radar, VHF, electronic throttles, and joystick thruster controls, all work in unison to get you where you want to go, quickly and safely.

Perhaps the most exciting feature of the C-32 C is the Clear-Path swim platform boasting thirty-two square feet of level, unobstructed, nonskid decking without any outboard well, rigging tubes or hoses to trip over. Heavy-duty stainless-steel handrails provide stability for boarding, fishing, watersports, and safe dinghy access. To sum it all up, the C-32 C is a robust, do it all outboard cruiser that gives you the freedom to get out there and fish, cruise, explore, and more!

## Specifications

Length rigged LOA (motors down)	37' 8"	11.5 m
Length rigged LOA (motors up)	39' 10"	12.1 m
Beam	10'	3.05 m
Draft (motors up)	26"	0.66 m
Draft (motors down)	33"	0.84 m
Weight (dry)	11,400 lbs	5,171 kg
Height on factory trailer	13' 6"	4.1 m
Fuel capacity	300 U.S. Gal	1,135.6 L
Water capacity	60 U.S. Gal	227.1 L
Holding tank capacity	40 U.S. Gal	151.4 L



# Standard Features

## Performance

- Twin 300 HP Yamaha F300 outboards
- Double stepped hull
- Electric trim tabs**
- Laminar flow interrupters
- Bow and stern thruster**
- Thruster wireless remote**
- Trailerable - 10' beam

## Accommodations & Interior Comfort

- Cabin drink holders, 4
- Curtains for privacy
- Dinette (seats 4) converts to bed
- Fully enclosed head**
- Fusion stereo system (multi-zone)**
- Hatches, pilothouse roof, solar reflective, 4
- Hatches, stateroom, 2
- Indirect cabin lighting
- Island bed**
- LED lighting**
- Electric marine toilet w/ holding tank, pump out**
- Memory foam mattress**
- Midship stateroom
- Opening portlights, 7
- Private forward stateroom
- Shower with enclosure
- Storage under mattress
- TV/DVD in salon**
- TV/DVD in stateroom**

## Deck Features

- Anchor package, 22 lb, 50' chain, 200' line**
- Bow lounge seating, 3
- Bow beaching ladder, stainless steel**
- Bow pulpit**
- Clear Path engine rigging
- Clear Path swim step
- Folding stainless steel mast for trailering
- Forward line storage
- ReFlex high density closed cell foam decking**
- Rocket launchers, 6
- Rod holders, 2**
- Sport racks, stainless steel**
- Swimming ladder, stainless steel
- Swim step, with built-in fenders**
- Washdown system**
- Windlass, bow and helm controls**



## Cockpit

- Cockpit cover, hard-top**
- Cockpit drink holders, 6
- Cockpit hardtop w/ hatches
- Cockpit hardtop w/ lights
- Cockpit refrigerator**
- Cockpit seating, 7+

## Cockpit sink

- Electric grill
- Fold-out cockpit seating
- Fold-out gunwale seating
- Livewell
- Opening glass bulkhead w/ reversible seat**
- Transom entry door for boarding**

## Helm

- AIS receiving**
- Color engine display**
- Digital fuel flow data**
- Electronic shift and throttle control, twin-lever**
- Garmin autopilot**
- Garmin navigation system w/ GPS and sonar, 8612xsv**
- Garmin radar, xHD**
- Helm drink holders, 2
- Helm seat, double
- USB charging ports
- Windshield wipers, 2**

## Galley

- Galley cabinets, 3
- Galley drawers, 2
- Microwave**
- Oven**
- Refrigerator/freezer**
- Sink with hot and cold water**
- Wine/water cooler**

## Mechanical & Electrical

- AC electrical panel
- Batteries**
- Battery charger**
- DC electrical panel
- Galvanic isolator**
- Inverter**
- Macerator discharge**
- Seawater strainer(s)
- Shore power cord(s)
- Solar panel w/ controller**
- Underwater Lights**

## Safety

- Carbon monoxide detectors
- Courtesy lights
- Electric horn
- Illuminated compass
- Navigation lights
- Safety kit: fenders, lines, flares, fire ext, first aid kit, life jackets, boat hook**
- Spotlight with remote**
- Swim platform rails**
- VHF radio, DSC capable**
- Window defrosters

## Construction

- Bonded electrical system
- Foam-filled fiberglass stringer grid system
- Self bailing cockpit
- Stainless steel cleats, rails, hardware
- Vinylester barrier coat

## CUTWATER BOATS = MORE VALUE

**Bolded items:** High value features included in the price of the Cutwater C-32 C. Other manufacturers oftentimes list these features as options with an additional cost.



## Additional Factory Options

Aft cockpit sun and sunset shades	\$1,575
Aft cockpit bimini top with boot	\$3,610
Aft Station steering with electronic controls	\$5,220
Aluminum triple axle trailer, electric/hydraulic brakes, spare tire w/bracket	\$16,490
Cockpit freezer in lieu of standard refrigerator	\$630
Cockpit ice maker in lieu of standard refrigerator	\$630
Dinghy lift (w/ 290 RIB inflatable)	\$9,305
Downrigger plugs and pads (LE only, included in NW)	\$390
Factory Delivery Experience	\$3,150
Garmin GXM Weather Antenna	\$1,575
Hull color upgrade (from standard White)	\$7,875

## Cutwater 32 C Packages - FACTORY DIRECT PRICING

The Cutwater 32 C is sold **fully-equipped** and **ready to cruise** with an expansive collection of premium features and outfitted in one of two packages.

**Northwest Edition:** Most commonly used in colder climates where air conditioning would not be needed or necessary. **Equipped with diesel forced air heater, downrigger plugs and pads, and propane stove & oven.**

**NORTHWEST EDITION, FULLY EQUIPPED FROM:**  
**\$344,937.00\***

**Luxury Edition:** Most commonly used in warmer climates where air conditioning is a must. **Equipped with air conditioning/reverse cycle heating, convection oven & microwave combo, diesel generator w/ sound shield, and electric stovetop.**

**LUXURY EDITION, FULLY EQUIPPED FROM:**  
**\$359,937.00\***

\*Options, freight & taxes extra.

Prices, specifications, equipment and options may change without notice. Information on this sheet should not be used for navigation. 0821



47 37th st NE  
Auburn, Washington, 98002  
Phone 253.839.5213  
[www.CutwaterBoats.com](http://www.CutwaterBoats.com)